

SportMaster®

SPORT SURFACES



INTRODUCING
THE

COLORPLUS
FUSION
SYSTEM

Derived from the original ColorPlus Pigment Dispersions, Fusion combines an equal blend of two standard colors to create an exciting new expanded catalog of colors.

To see the full expanded FUSION color chart, visit
www.sportmaster.net/colorplusfusion

TOURNAMENT-QUALITY SPORT SURFACING AND REPAIR PRODUCTS

SPORT SURFACING



SportMaster® SPORT SURFACES



COLORPLUS™ SYSTEM

A 100% ACRYLIC, SPORT SURFACING SYSTEM FOR TENNIS, BASKETBALL, AND MULTIPURPOSE COURT SURFACES

IDEAL FOR APPLICATION ON ASPHALT, CONCRETE AND EXISTING SPORT SURFACES

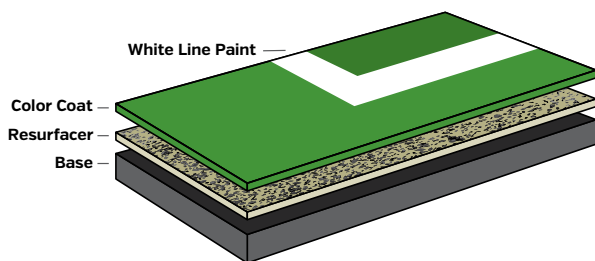
HOW THE SYSTEM WORKS

The ColorPlus System consists of a 100% acrylic Neutral Concentrate (available with or without sand) and the ColorPlus Pigment Dispersion. What is truly remarkable about the ColorPlus System is the fact that only 2 gallons of ColorPlus pigment are needed to colorize an entire 30 gallon keg of Neutral Concentrate.

EASE OF MIXING

ColorPlus is a highly concentrated pigment dispersion that disperses readily in Neutral Concentrate. Our proprietary technology enables ColorPlus to disperse completely with minimal mixing.

COLORPLUS SYSTEM
Thickness: Approx. 35-40 mils
1 Coat - Acrylic Resurfacer
2 Coats of Color



COLORPLUS™ PIGMENT DISPERSION

A HIGHLY CONCENTRATED PIGMENT DISPERSION

Designed to disperse readily and completely in Neutral Concentrate.



PRODUCT #	DESCRIPTION	WEIGHT	PRICE
C1374G	Forest Green, 1 - Gallon Pail	17 lbs.	\$ 72.99
C1372G	Light Green, 1 - Gallon Pail	17 lbs.	\$ 72.99
C1373G	Dark Green, 1 - Gallon Pail	17 lbs.	\$ 72.99
C1378G	Beige, 1 - Gallon Pail	17 lbs.	\$ 60.99
C1370G	Red, 1 - Gallon Pail	17 lbs.	\$ 60.99
C1386G	Maroon, 1 - Gallon Pail	17 lbs.	\$ 60.99
C1388G	Tournament Purple, 1 - Gallon Pail	17 lbs.	\$ 170.99
C1380G	Gray, 1 - Gallon Pail	17 lbs.	\$ 60.99
C1384G	Blue, 1 - Gallon Pail	17 lbs.	\$ 60.99
C1385G	Light Blue, 1 - Gallon Pail	17 lbs.	\$ 60.99
C1399G	Dove Gray, 1 - Gallon Pail	17 lbs.	\$ 60.99
C1383G	Ice Blue, 1 - Gallon Pail	17 lbs.	\$ 60.99
C1389G	Sandstone, 1 - Gallon Pail	17 lbs.	\$ 72.99
C1379G	Orange, 1 - Gallon Pail	17 lbs.	\$ 136.99
C1390G	Yellow, 1 - Gallon Pail	17 lbs.	\$ 73.99
C1392G	Brite Red, 1 - Gallon Pail	17 lbs.	\$ 291.99
C1660G	Black Dispersion, 1 - Gallon Pail	17 lbs.	\$ 20.99

**COLORPLUS
FUSION**

For more than 100 additional color choices, check out ColorPlus Fusion here:
www.sportmaster.net/colorplusfusion

MAROON	GRAY	LIGHT BLUE	ICE BLUE LEED CREDIT *SRI=62	ORANGE	FOREST GREEN
TOURNAMENT PURPLE	BLUE	DOVE GRAY LEED CREDIT *SRI=33	SANDSTONE LEED CREDIT *SRI=46	YELLOW	LIGHT GREEN LEED CREDIT *SRI=31



NEUTRAL CONCENTRATE™

PREMIUM 100% ACRYLIC EMULSION

Designed for maximum performance and weather resistance. Neutral Concentrate is available with or without sand. Neutral Concentrate can also be used as an acrylic resurfacer filler coat.

PRODUCT #	DESCRIPTION	COVERAGE	WEIGHT	PRICE
C1360K	30 - Gallon Keg	5400 sq. ft.	305 lbs.	\$ 376.99
C1360D	55 - Gallon Drum	9900 sq. ft.	570 lbs.	\$ 585.99
C1360T	275 - Gallon Tote	49500 sq. ft.	2,875 lbs.	\$ 2,944.99
C1360B	Bulk	-	-	- quoted -

MIXING PROCEDURES:

For use as a color coat:

Neutral Concentrate.....55 gallons
 Water.....28-33 gallons
 ColorPlus Pigment Dispersion.....4 gallons
 Sand [80-100 mesh].....400 lbs.

For use as an acrylic resurfacer:

Neutral Concentrate.....55 gallons
 Water.....30-33 gallons
 Sand [50-60 mesh].....up to 600 lbs.

MATERIAL REQUIREMENTS (coverage - 180 sf/gal):

For use as a color coat:
 .05 to .07 gallon per square yard per coat

For use as an acrylic resurfacer:
 .07 to .09 gallon per square yard per coat



NEUTRAL CONCENTRATE™ WITH SAND

PREMIUM 100% ACRYLIC EMULSION WITH SAND

PRODUCT #	DESCRIPTION	COVERAGE	WEIGHT	PRICE
C1365K	30 - Gallon Keg	3750 sq. ft.	390 lbs.	\$ 376.99
C1365D	55 - Gallon Drum	6875 sq. ft.	660 lbs.	\$ 585.99
Note: Neutral Concentrate With Sand is not available in 275 - Gallon Totes				
C1365B	Bulk	-	-	- quoted -

MIXING PROCEDURES:

For use as a color coat:

Neutral Concentrate with Sand.....30 gallons
 Water.....12 gallons
 ColorPlus Pigment Dispersion.....2 gallons

MATERIAL REQUIREMENTS (coverage - 125 sf/gal):

For use as a color coat:
 .07 to .09 gallon per square yard per coat

FLEXIBLE CONCENTRATE

ELASTOMERIC COLOR COATING BASE TO BE MIXED WITH COLORPLUS PIGMENT DISPERSION FOR LONG-TERM FLEXIBILITY

PRODUCT #	DESCRIPTION	COVERAGE	WEIGHT	PRICE
C1455P	5 - Gallon Pail	900 sq. ft.	48 lbs.	\$ 69.99
C1455K	30 - Gallon Keg	5400 sq. ft.	305 lbs.	\$ 441.99
C1455D	55 - Gallon Drum	9900 sq. ft.	570 lbs.	\$ 700.99



MIXING PROCEDURES:

Flexible Concentrate.....55 gallons
 Water.....28-33 gallons
 ColorPlus Pigment Dispersion.....4 gallons
 Sand [80-100 Mesh].....400 lbs.

MATERIAL REQUIREMENTS (coverage - 180 sf/gal):

.05 to .07 gallons per square yard per coat. A minimum of two coats are recommended.

DARK GREEN

BROWN
COLORPLUS FUSION

BRITE RED

BEIGE

RED
LEED CREDIT *SRI=36

BLACK

NOTE: Colors will vary somewhat due to printing limitations. Ask your SealMaster Representative for a color chip card for more accurate representation.

*Solar Reflectance Index (SRI) is the percentage of solar energy that is reflected by a surface. These specific colors qualify for the LEED [Leadership in Energy and Environmental Design] program under Section SS Credit 7.1: Heat Island Effect: Non-Roof. For more information visit www.usgbc.org or contact a LEED accredited professional.



SportMaster® SPORT SURFACES

PROCUSHION™ SYSTEM

A 100% ACRYLIC, CUSHIONED SPORT SURFACING SYSTEM FOR TENNIS, BASKETBALL, AND OTHER RECREATIONAL AREAS



**CUSHIONMASTER™ I & II CONTAIN
POST-CONSUMER RECYCLED RUBBER**

Procushion System Uses:

- Tennis, Basketball & Pickleball Courts
- Recreational areas or game courts with tennis shoe traffic
- Walking and jogging trails
- Asphalt, concrete, or existing acrylic surfaces

The ProCushion System adds multiple coats of two unique components between the Acrylic Resurfacer and the colored surface coatings.

CUSHIONMASTER II

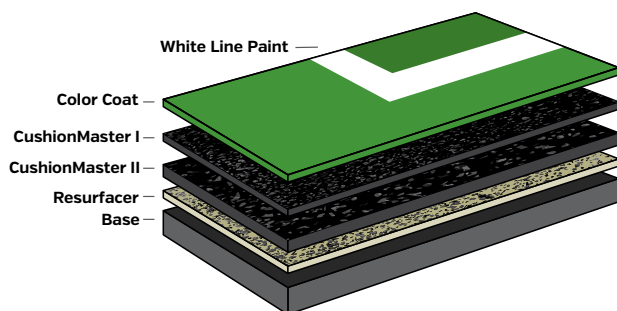
Base layers filled with coarse rubber particles to provide the build, or thickness of the system.

CUSHIONMASTER I

Top layers fortified with small rubber particles, to fill and smooth out the coarse rubber texture, and prepare to accept the colored surface coatings.

FLEXIBLE CONCENTRATE

Elastomeric acrylic surfacing layers. Mix with ColorPlus™ Pigment Dispersion to achieve the desired color. Contains proprietary acrylic resin to match the flexibility of the CushionMaster layers.



**FLEXIBLE
CONCENTRATE**
AVAILABLE ON PAGE 103

MAROON

GRAY

LIGHT BLUE

ICE BLUE
LEED CREDIT *SRI=62

ORANGE

FOREST GREEN

TOURNAMENT
PURPLE

BLUE

DOVE GRAY
LEED CREDIT *SRI=33SANDSTONE
LEED CREDIT *SRI=46

YELLOW

LIGHT GREEN
LEED CREDIT *SRI=31

There are multiple ProCushion alternative systems to meet your needs:

PROCUSHION- ECONOMY	PROCUSHION - STANDARD	PROCUSHION - PREMIUM
Thickness: Approx. 75-80 mils	Thickness: Approx. 105-110 mils	Thickness: Approx. 140-145 mils
1 Coat - Acrylic Resurfacer	1 Coat - Acrylic Resurfacer	1 Coat - Acrylic Resurfacer
2 Coats - CushionMaster II	3 Coats - CushionMaster II	5 Coats - CushionMaster II
1 Coat - CushionMaster I	2 Coats - CushionMaster I	2 Coats - CushionMaster I
2 Coats - CushionMaster Color	2 Coats - CushionMaster Color	2 Coats - CushionMaster Color



CUSHIONMASTER™ I FINE RUBBER

PRODUCT #	DESCRIPTION	COVERAGE	WEIGHT	PRICE
C1450P	5 - Gallon Pail	450 sq. ft.	50 lbs.	\$ 77.99
C1450K	30 - Gallon Keg	2700 sq. ft.	290 lbs.	\$ 474.99
C1450D	55 - Gallon Drum	4950 sq. ft.	550 lbs.	\$ 775.99

MIXING PROCEDURES:

CushionMaster I..... 10 gallons
Water 3 gallons

MATERIAL REQUIREMENTS (coverage - 90 sf/gal):

.10 gallons per square yard
per coat [.20 gallon per
square yard for two coats].

CUSHIONMASTER™ II COARSE RUBBER

PRODUCT #	DESCRIPTION	COVERAGE	WEIGHT	PRICE
C1460P	5 - Gallon Pail	300 sq. ft.	50 lbs.	\$ 77.99
C1460K	30 - Gallon Keg	1800 sq. ft.	290 lbs.	\$ 474.99
C1460D	55 - Gallon Drum	3300 sq. ft.	550 lbs.	\$ 775.99

MIXING PROCEDURES:

CushionMaster II..... 10 gallons
Water 3 gallons

MATERIAL REQUIREMENTS (coverage - 60 sf/gal):

.15 gallons per square yard per
coat [.45 gallon per square
yard for three coats].

DARK GREEN

BROWN
COLORPLUS FUSION

BRITE RED

BEIGE

RED
LEED CREDIT *SRI=36

BLACK

NOTE: Colors will vary somewhat due to printing limitations. Ask your SealMaster Representative for a color chip card for more accurate representation.

*Solar Reflectance Index (SRI) is the percentage of solar energy that is reflected by a surface. These specific colors qualify for the LEED (Leadership in Energy and Environmental Design) program under Section SS Credit 7.1: Heat Island Effect: Non-Roof. For more information visit www.usgbc.org or contact a LEED accredited professional.



SportMaster® SPORT SURFACES



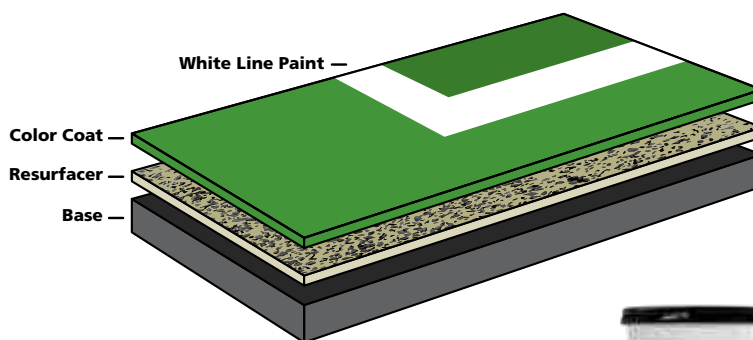
SPORTMASTER® SYSTEM

100% ACRYLIC COLOR COATINGS FOR
TENNIS COURTS, RUNNING TRACKS, AND
MULTIPURPOSE SPORT SURFACES

**OPTIMUM PERFORMANCE FOR BOTH PLAYER
AND SURFACE**

SportMaster® System Uses:

- Tennis Courts, Pickleball & Other Racquet Sports
- Basketball Courts
- Playgrounds & Game Courts
- Asphalt or Concrete Recreational Areas
- Multipurpose Courts



READY-MIX COLOR

A PREMIUM 100% ACRYLIC EMULSION

Ready-Mix Color is ideal for maintenance crews and do-it-yourselfers. The proper sand and water is already added. Simply stir, pour, and apply by soft rubber squeegee. Available in 8 standard colors. Ready-Mix Color is available in 5-gallon pails. [See page 116 for Sport Squeegee.]

PRODUCT #	DESCRIPTION	COVERAGE	WEIGHT	PRICE
C1230P	Forest Green - 5 gal. Pail	375 sq. ft.	60 lbs.	\$ 69.99
C1250P	Light Green - 5 gal. Pail	375 sq. ft.	60 lbs.	\$ 69.99
C1282P	Dark Green - 5 gal. Pail	375 sq. ft.	60 lbs.	\$ 69.99
C1200P	Beige - 5 gal. Pail	375 sq. ft.	60 lbs.	\$ 69.99
C1270P	Red - 5 gal. Pail	375 sq. ft.	60 lbs.	\$ 68.99
C1260P	Maroon - 5 gal. Pail	375 sq. ft.	60 lbs.	\$ 68.99
C1240P	Gray - 5 gal. Pail	375 sq. ft.	60 lbs.	\$ 68.99
C1210P	Blue - 5 gal. Pail	375 sq. ft.	60 lbs.	\$ 68.99

FOREST GREEN

LIGHT GREEN
LEED CREDIT *SRI=31

DARK GREEN

BEIGE

BROWN
COLORPLUS FUSION

RED
LEED CREDIT *SRI=36

MAROON

GRAY

BLUE

NOTE: Colors will vary somewhat due to printing limitations. Ask your SealMaster Representative for a color chip card for more accurate representation.

*Solar Reflectance Index [SRI] is the percentage of solar energy that is reflected by a surface. These specific colors qualify for the LEED (Leadership in Energy and Environmental Design) program under Section SS Credit 7.1: Heat Island Effect: Non-Roof. For more information visit www.usgbc.org or contact a LEED accredited professional.

MIXING PROCEDURES:

Use as is. Do not dilute. Simply stir, pour, and apply.

MATERIAL REQUIREMENTS (coverage - 75 sf/gal):

.12 to .15 gallon of Ready-Mix per square yard per coat. Two coats are recommended.



COLOR CONCENTRATE

A 100% acrylic emulsion coating designed for on-site mixing with silica sand and water. Ideal for color coating tennis courts, basketball courts, and other pavement surfaces. Two coats minimum are recommended. The sand used for mixing with color concentrate should be an 80-100 mesh, ultra fine sand. Apply by soft rubber squeegee. Available in 8 standard colors. Color Concentrate is available in 5-gallon pails "P", 30-gallon Kegs "K", and 55-gallon drums "D".

PRODUCT #	DESCRIPTION	COVERAGE	WEIGHT	PRICE
C1030P	Forest Green - Pail	900 sq. ft.	48 lbs.	\$ 77.99
C1030K	Forest Green - Keg	5400 sq. ft.	305 lbs.	\$ 492.99
C1030D	Forest Green - Drum	9900 sq. ft.	570 lbs.	\$ 797.99
C1050P	Light Green - Pail	900 sq. ft.	48 lbs.	\$ 77.99
C1050K	Light Green - Keg	5400 sq. ft.	305 lbs.	\$ 492.99
C1050D	Light Green - Drum	9900 sq. ft.	570 lbs.	\$ 797.99
C1082P	Dark Green - Pail	900 sq. ft.	48 lbs.	\$ 77.99
C1082K	Dark Green - Keg	5400 sq. ft.	305 lbs.	\$ 492.99
C1082D	Dark Green - Drum	9900 sq. ft.	570 lbs.	\$ 797.99
C1000P	Beige - Pail	900 sq. ft.	48 lbs.	\$ 77.99
C1000K	Beige - Keg	5400 sq. ft.	305 lbs.	\$ 492.99
C1000D	Beige - Drum	9900 sq. ft.	570 lbs.	\$ 797.99
C1070P	Red - Pail	900 sq. ft.	48 lbs.	\$ 74.99
C1070K	Red - Keg	5400 sq. ft.	305 lbs.	\$ 474.99
C1070D	Red - Drum	9900 sq. ft.	570 lbs.	\$ 768.99
C1060P	Maroon - Pail	900 sq. ft.	48 lbs.	\$ 74.99
C1060K	Maroon - Keg	5400 sq. ft.	305 lbs.	\$ 474.99
C1060D	Maroon - Drum	9900 sq. ft.	570 lbs.	\$ 768.99
C1040P	Gray - Pail	900 sq. ft.	48 lbs.	\$ 74.99
C1040K	Gray - Keg	5400 sq. ft.	305 lbs.	\$ 474.99
C1040D	Gray - Drum	9900 sq. ft.	570 lbs.	\$ 768.99
C1010P	Blue - Pail	900 sq. ft.	48 lbs.	\$ 74.99
C1010K	Blue - Keg	5400 sq. ft.	305 lbs.	\$ 474.99
C1010D	Blue - Drum	9900 sq. ft.	570 lbs.	\$ 768.99

MIXING PROCEDURES:

Color Concentrate..... 55 gallons
 Water.....28-33 gallons
 Sand (80-100 Mesh)400 lbs.

MATERIAL REQUIREMENTS (coverage - 180 sf/gal):

.05 to .07 gallons per square yard per coat. A minimum of two coats are recommended.

COLOR CONCENTRATE WITH SAND

Similar to our standard Concentrate but with sand already added. Color Concentrate™ with Sand takes the guesswork out of choosing the right type of sand. Easy to use, just add water and apply by soft rubber squeegee. Available in 8 standard colors. Color Concentrate (with sand) is available in 5-gallon pails "P", 30-gallon Kegs "K", and 55-gallon drums "D".

PRODUCT #	DESCRIPTION	COVERAGE	WEIGHT	PRICE
C1130P	Forest Green - Pail	625 sq. ft.	66 lbs.	\$ 77.99
C1130K	Forest Green - Keg	3750 sq. ft.	390 lbs.	\$ 492.99
C1130D	Forest Green - Drum	6875 sq. ft.	660 lbs.	\$ 797.99
C1150P	Light Green - Pail	625 sq. ft.	66 lbs.	\$ 77.99
C1150K	Light Green - Keg	3750 sq. ft.	390 lbs.	\$ 492.99
C1150D	Light Green - Drum	6875 sq. ft.	660 lbs.	\$ 797.99
C1182P	Dark Green - Pail	625 sq. ft.	66 lbs.	\$ 77.99
C1182K	Dark Green - Keg	3750 sq. ft.	390 lbs.	\$ 492.99
C1182D	Dark Green - Drum	6875 sq. ft.	660 lbs.	\$ 797.99
C1100P	Beige - Pail	625 sq. ft.	66 lbs.	\$ 77.99
C1100K	Beige - Keg	3750 sq. ft.	390 lbs.	\$ 492.99
C1100D	Beige - Drum	6875 sq. ft.	660 lbs.	\$ 797.99
C1170P	Red - Pail	625 sq. ft.	66 lbs.	\$ 74.99
C1170K	Red - Keg	3750 sq. ft.	390 lbs.	\$ 474.99
C1170D	Red - Drum	6875 sq. ft.	660 lbs.	\$ 768.99
C1160P	Maroon - Pail	625 sq. ft.	66 lbs.	\$ 74.99
C1160K	Maroon - Keg	3750 sq. ft.	390 lbs.	\$ 474.99
C1160D	Maroon - Drum	6875 sq. ft.	660 lbs.	\$ 768.99
C1140P	Gray - Pail	625 sq. ft.	66 lbs.	\$ 74.99
C1140K	Gray - Keg	3750 sq. ft.	390 lbs.	\$ 474.99
C1140D	Gray - Drum	6875 sq. ft.	660 lbs.	\$ 768.99
C1110P	Blue - Pail	625 sq. ft.	66 lbs.	\$ 74.99
C1110K	Blue - Keg	3750 sq. ft.	390 lbs.	\$ 474.99
C1110D	Blue - Drum	6875 sq. ft.	660 lbs.	\$ 768.99

MIXING PROCEDURES:

Color Concentrate with Sand30 gallons
 Water..... 12 gallons

MATERIAL REQUIREMENTS (coverage - 125 sf/gal):

.07 to .09 gallons per square yard per coat. A minimum of two coats are recommended.

DESIGNED TO SMOOTH & LEVEL PAVEMENT PRIOR TO COLOR COATING

Available in 100% acrylic formulations. SportMaster Resurfacers can be used for both coating and patching.

ACRYLIC RESURFACER

THE ULTIMATE TENNIS COURT RESURFACER

Acrylic Resurfacer Features:

- 100% Acrylic
- Available in both black and neutral colors
- Can be used as a coating or patching material
- Also available with sand already added [Acrylic Resurfacer w/ Sand]



Neutral Resurfacer



Black Resurfacer

PRODUCT #	DESCRIPTION	COVERAGE	WEIGHT	PRICE
C1300P	Black 5 - Gallon Pail	625 sq. ft.	48 lbs.	\$ 65.99
C1300K	Black 30 - Gallon Keg	3,750 sq. ft.	280 lbs.	\$ 409.99
C1300D	Black 55 - Gallon Drum	6,875 sq. ft.	525 lbs.	\$ 649.99
C1300B	Bulk	-	-	- quoted -
C1310P	Neutral 5 - Gallon Pail	625 sq. ft.	48 lbs.	\$ 65.99
C1310K	Neutral 30 - Gallon Keg	3,750 sq. ft.	280 lbs.	\$ 409.99
C1310D	Neutral 55 - Gallon Drum	6,875 sq. ft.	525 lbs.	\$ 649.99
C1310B	Bulk	-	-	- quoted -

MIXING PROCEDURES:

Acrylic Resurfacer55 gallons
Water33 gallons
Sand [50-60 Mesh]800 lbs.

MATERIAL REQUIREMENTS

[coverage - 125 sf/gal]:

.07 to .09 gallon per square yard per coat.

ACRYLIC RESURFACER WITH SAND

PRODUCT #	DESCRIPTION	COVERAGE	WEIGHT	PRICE
C1330P	Black 5 - Gallon Pail	400 sq. ft.	73 lbs.	\$ 65.99
C1330K	Black 30 - Gallon Keg	2,400 sq. ft.	435 lbs.	\$ 409.99
C1330D	Black 55 - Gallon Drum	4,400 sq. ft.	785 lbs.	\$ 649.99

MIXING PROCEDURES:

Acrylic Resurfacer with Sand ...30 gallons
Water12 gallons

MATERIAL REQUIREMENTS

[coverage - 80 sf/gal]:

.11 to .13 gallon per square yard per coat.

FLEXIBLE ACRYLIC RESURFACER™

Flexible Acrylic Resurfacer Features:

- Elastomeric formula for long-term flexibility
- Ideal for crack repair, membrane repairs & cushioned courts
- Neutral color

PRODUCT #	DESCRIPTION	COVERAGE	WEIGHT	PRICE
C1320P	5 - Gallon Pail	625 sq. ft.	48 lbs.	\$ 68.99
C1320K	30 - Gallon Keg	3,750 sq. ft.	280 lbs.	\$ 449.99
C1320D	55 - Gallon Drum	6,875 sq. ft.	525 lbs.	\$ 712.99

MIXING PROCEDURES:

Flexible Acrylic Resurfacer55 gallons
Silica Sand [50-60 Mesh]500-600 lbs.
Water33 gallons

MATERIAL REQUIREMENTS

[coverage - 125 sf/gal]:

.07 to .09 gallon per square yard per coat.



ALL CATALOG PRICES ARE F.O.B. SANDUSKY, OHIO



ACRYLIC PATCH BINDER

A 100% acrylic liquid binder designed for on-site mixing with sand and cement. Ideal for leveling and repairing low spots and depressions up to 1/2" deep on tennis court and other sport surface pavements.

NOTE: Patching Straightedges available on page 116.

PRODUCT #	DESCRIPTION	WEIGHT	PRICE
C1480P	5 - Gallon Pail	47 lbs.	\$ 117.99
C1480K	30 - Gallon Keg	280 lbs.	\$ 723.99
C1480D	55 - Gallon Drum	500 lbs.	\$ 1,232.99

MIXING PROCEDURES:

Acrylic Patch Binder 3.5 gallons
 Sand [50-60 Mesh] 100 lbs.
 Cement 15-20 lbs.
 Water up to 1/2 gallon if needed

NOTE: Thoroughly mix dry sand and cement together first before adding to Acrylic Patch Binder.

MATERIAL REQUIREMENTS (coverage):

One gallon will produce enough patch mix (when mixed with sand and cement) to fill .86 square yard (approximately 7.75 square feet) at 1/4" depth.



CRACKMAGIC™

Premium grade heavy-bodied 100% acrylic elastomeric crack filler. Remains flexible at temperatures below zero. Available in neutral, green and red. Packaged four 1-gallon pails to a box or sold individually.

PRODUCT #	DESCRIPTION	WEIGHT	PRICE
C1590G	Neutral 1 - Gallon Pail	10 lbs.	\$ 53.99
C1570G	Green 1 - Gallon Pail	10 lbs.	\$ 53.99
C1580G	Red 1 - Gallon Pail	10 lbs.	\$ 53.99

MIXING PROCEDURES:

Use as is. Do not dilute.

MATERIAL REQUIREMENTS (coverage):

Typically, one gallon will fill approximately 75-150 feet of cracks depending on depth and width of crack.



ACRYLIC CRACK PATCH

A 100% acrylic trowel grade crack filler. Fortified with sand for filling cracks up to 1" wide on tennis courts and other sport surface pavements. Available in red, green, blue or neutral. Packaged in four 1-gallon pails to a box or sold individually.

PRODUCT #	DESCRIPTION	WEIGHT	PRICE
C1520G	Neutral 1 - Gallon Pail	17 lbs.	\$ 22.99
C1500G	Green 1 - Gallon Pail	17 lbs.	\$ 22.99
C1510G	Red 1 - Gallon Pail	17 lbs.	\$ 22.99
C1515G	Blue 1 - Gallon Pail	17 lbs.	\$ 22.99

MIXING PROCEDURES:

Use as is. Do not dilute.

MATERIAL REQUIREMENTS (coverage):

Typically, one gallon will fill approximately 75-150 feet of cracks depending on depth and width of crack.



COURTFLEX™ CRACK SEALANT

A 100% acrylic elastomeric crack sealant designed for filling cracks up to 1/2" wide. Flexible down to -10°F. Available in red, green or neutral. Packaged six jugs to a box or sold individually.

PRODUCT #	DESCRIPTION	WEIGHT	PRICE
C1560G	Neutral 1 - Gallon Jug	10 lbs.	\$ 31.99
C1540G	Green 1 - Gallon Jug	10 lbs.	\$ 31.99
C1550G	Red 1 - Gallon Jug	10 lbs.	\$ 31.99

MIXING PROCEDURES:

Use as is. Do not dilute.

MATERIAL REQUIREMENTS (coverage):

Typically, one gallon will fill approximately 150-200 feet of cracks depending on depth and width of crack.



CLEAR CRACK SEALANT

Clear drying acrylic crack sealant for small cracks on sport surfaces. Keep cracks sealed on sport surfaces without seeing unsightly repairs.

PRODUCT #	DESCRIPTION	WEIGHT	PRICE
C1530G	1 - Gallon Pail	10 lbs.	\$ 57.99

MIXING PROCEDURES:

Use as is. Do not dilute.

MATERIAL REQUIREMENTS (coverage):

Typically, one gallon will fill approximately 150-200 feet of cracks depending on depth and width of crack.

WHITE LINE PAINT

A 100% acrylic water-based line paint highly pigmented for one coat coverage. Packaged in easy-to-use 1-gallon jugs with pour spouts, and 5-gallon pails. Available without or with sand [textured].

NOTE: See Line Taping Machine on page 115.

PRODUCT #	DESCRIPTION	WEIGHT	PRICE
C160OG	1 - Gallon Jug	12 lbs.	\$ 36.99
C1600P	5 - Gallon Pail	60 lbs.	\$ 141.99
C1620G	Textured 1 - Gallon Jug	13 lbs.	\$ 36.99
C1620P	Textured 5 - Gallon Pail	65 lbs.	\$ 141.99



MIXING PROCEDURES:

Use as is. Do not dilute.

MATERIAL REQUIREMENTS (coverage):

500-600 feet of 2" line per gallon.

STRIPE RITE™

FOR SHARP LINES! A 100% acrylic, clear-drying emulsion primer that is applied prior to T/C line paint to fill the minor voids between the masking tape and court surface. Assures crisp, razor-sharp lines.

PRODUCT #	DESCRIPTION	WEIGHT	PRICE
C1610G	1 - Gallon Jug	10 lbs.	\$ 23.99
C1610P	5 - Gallon Pail	47 lbs.	\$ 85.99

MIXING PROCEDURES:

Use as is. Do not dilute.

MATERIAL REQUIREMENTS (coverage):

500-600 feet of 2" line per gallon.



ACRYLIC ADHESION PROMOTER

100% acrylic emulsion primer designed to promote the adhesion of repair products and coatings. Apply by spray, roller, or brush. Ready to use.

PRODUCT #	DESCRIPTION	COVERAGE	WEIGHT	PRICE
C1650P	5 - Gallon Pail	1,250 sq. ft.	46 lbs.	\$ 68.99
C1650K	30 - Gallon Keg	7,500 sq. ft.	270 lbs.	\$ 420.99
C1650D	55 - Gallon Drum	13,750 sq. ft.	510 lbs.	\$ 678.99

MIXING PROCEDURES:

Use as is. Do not dilute.

MATERIAL REQUIREMENTS (coverage):

200-300 square feet per gallon.



SPORTWAX™ CLEAR COAT

Clear drying, 100% acrylic top coat for tennis courts, basketball courts, and more. Extends the life of surface coatings. Apply by squeegee, lambswool applicator, or spray. SportWax Clear Coat is a ready-to-use product.

PRODUCT #	DESCRIPTION	COVERAGE	WEIGHT	PRICE
C1850P	5 - Gallon Pail	1250 sq. ft.	46 lbs.	\$ 86.99
C1850K	30 - Gallon Keg	7500 sq. ft.	270 lbs.	\$ 528.99
C1850D	55 - Gallon Drum	13750 sq. ft.	510 lbs.	\$ 860.99

MIXING PROCEDURES:

Use as is. Do not dilute.

MATERIAL REQUIREMENTS (coverage):

200-300 feet per gallon.



SportMaster® SPORT SURFACES



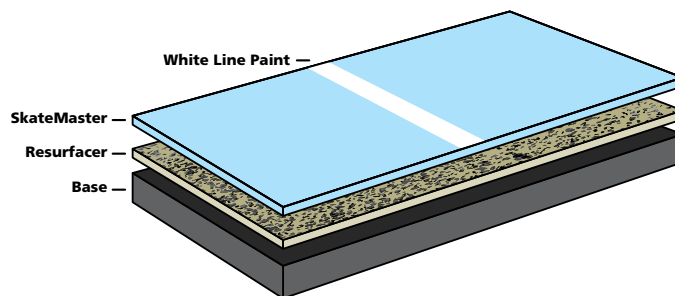
SKATEMASTER™ SYSTEM

A 100% ACRYLIC, SPECIALIZED SURFACING SYSTEM FOR INLINE ROLLER HOCKEY, SKATEBOARDING AND MORE

HIGH PERFORMANCE SURFACE COATING

SkateMaster System Uses:

- Rollerblading, skateboarding, and other roller sports
- Shuffleboard courts
- Playgrounds, game courts, basketball, etc.
- Multipurpose or heavy use areas



The SkateMaster System is comprised of the following products:

ACRYLIC RESURFACER - (Neutral)™

[1-2 coats] to fill voids in pavement and provide texture to ensure thorough coverage of the SkateMaster Coating.

SKATEMASTER™

[2-3 coats] SkateMaster comes in a neutral base, and is mixed with ColorPlus Pigment Dispersion to achieve any of the standard ColorPlus colors.

SKATEMASTER
Thickness: Approx. 40-45 mils
1 Coat - Acrylic Resurfacer
2 Coats - SkateMaster

NEUTRAL SKATEMASTER™

PRODUCT #	DESCRIPTION	COVERAGE	WEIGHT	PRICE
C1800K	30 - Gallon Keg	4500 sq.ft.	305 lbs.	\$ 538.99
C1800D	55 - Gallon Drum	8250 sq. ft.	520 lbs.	\$ 884.99

MIXING PROCEDURES:

Neutral SkateMaster™55 gallons
ColorPlus™ Pigment Dispersion.....4 gallons

NOTE: Up to 8 lbs. per gallon of sand [80-100 mesh] can be added to SkateMaster™ for a customized multipurpose surface.

MATERIAL REQUIREMENTS (coverage - 150 sf/gal):

.06 to .08 gallons per square yard per coat. (.12 to .16 gallons per square yard for two coats).

MAROON	GRAY	LIGHT BLUE	ICE BLUE LEED CREDIT *SRI=62	ORANGE	BRITE RED
TOURNAMENT PURPLE	BLUE	DOVE GRAY LEED CREDIT *SRI=33	SANDSTONE LEED CREDIT *SRI=46	YELLOW	BLACK
FOREST GREEN	DARK GREEN	BROWN COLORPLUS FUSION			
LIGHT GREEN LEED CREDIT *SRI=31	BEIGE	RED LEED CREDIT *SRI=36			

NOTE: Colors will vary somewhat due to printing limitations. Ask your SealMaster Representative for a color chip card for more accurate representation.

*Solar Reflectance Index [SRI] is the percentage of solar energy that is reflected by a surface. These specific colors qualify for the LEED [Leadership in Energy and Environmental Design] program under Section SS Credit 7.1: Heat Island Effect: Non-Roof. For more information visit www.usgbc.org or contact a LEED accredited professional.



NEW IN 2019

TRACKMASTER PRO™

FULL-DEPTH RUBBERIZED RUNNING TRACK SURFACING SYSTEM

AVAILABLE IN BLACK OR MULTIPLE COLORS

Multi-resin running track surfaces for college, high school, and other competition & recreational running tracks. Provides excellent footing and shock absorption, along with pleasing aesthetics.

For more information visit
www.sportmaster.net/trackmasterpro


SportMaster®
 SPORT SURFACES
TRACKMASTER PLUS™

A 100% ACRYLIC COATING FOR RUNNING TRACK & OTHER RECREATIONAL SURFACES

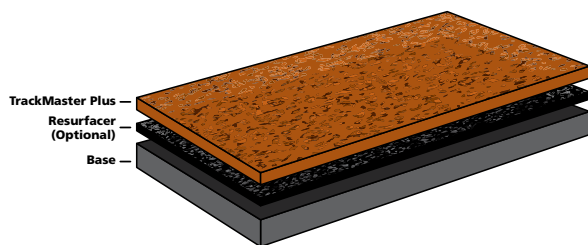


AVAILABLE IN SEVERAL COLORS

Premium quality, 100% acrylic emulsion fortified with rubber particles designed for coating asphalt and latex/rubber running track surfaces. TrackMaster Plus is available in attractive colors using the SportMaster ColorPlus™ System. TrackMaster Plus contains rubber granules. Squeegee, brush or spray application.

TrackMaster Plus Product Uses:

- Running Tracks
- Walking paths and jogging trails
- Coatings for rubberized asphalt tracks
- Asphalt, concrete, or existing acrylic surfaces

**TRACKMASTER PLUS**

Thickness: Approx. 50-55 mils

1 Coat - Acrylic Resurfacer

2 Coats - TrackMaster Plus

PRODUCT #	DESCRIPTION	COVERAGE	WEIGHT	PRICE
C1740K	Neutral 30 - Gallon Keg	1500 sq. ft.	290 lbs.	\$ 375.99
C1740D	Neutral 55 - Gallon Drum	2750 sq. ft.	550 lbs.	\$ 574.99
C1709K	Red 30 - Gallon Keg	1500 sq. ft.	290 lbs.	\$ 483.99
C1709D	Red 55 - Gallon Drum	2750 sq. ft.	550 lbs.	\$ 760.99

MIXING PROCEDURES:

Neutral TrackMaster Plus.....55 gallons
 Water.....13-14 gallons
 ColorPlus Pigment Dispersion [page 102].....4 gallons

MATERIAL REQUIREMENTS [coverage - 50 sf/gal]:

Approximately .15 to .20 gallon per square yard per coat depending on surface porosity.



MAROON

GRAY

LIGHT BLUE

ICE BLUE
LEED CREDIT *SRI=62

ORANGE

FOREST GREEN

TOURNAMENT
PURPLE

BLUE

DOVE GRAY
LEED CREDIT *SRI=33SANDSTONE
LEED CREDIT *SRI=46

YELLOW

LIGHT GREEN
LEED CREDIT *SRI=31



TRACKMASTER™

A polymer modified asphalt emulsion fortified with rubber particles designed for coating asphalt running tracks. Beautifies tracks and provides superior protection against oxidation, ravelling, and moisture penetration. Available in black only.

PRODUCT #	DESCRIPTION	COVERAGE	WEIGHT	PRICE
C1700K	30 - Gallon Keg	1500 sq. ft.	300 lbs.	\$ 279.99
C1700D	55 - Gallon Drum	2750 sq. ft.	575 lbs.	\$ 403.99
C1700B	Bulk	-	-	- quoted -

MIXING PROCEDURES:

TrackMaster.....55 gallons
Water.....15 - 17 gallons
Mix and apply with soft rubber squeegee or spray.

MATERIAL REQUIREMENTS (coverage - 50 sf/gal):

Approximately .15 to .20 gallon per square yard per coat depending on surface porosity.

TRACKFLEX™ CRACK SEALANT



Acrylic elastomeric pourable crack sealant designed for sealing cracks up to 1/2" wide in asphalt or latex/rubber track surfaces. TrackFlex is black, but can be coated with TrackMaster Plus to match surface color of track area.

PRODUCT #	DESCRIPTION	WEIGHT	PRICE
C1760G	1 - Gallon Jug	10 lbs.	\$ 32.99
C1760P	5 - Gallon Pail	47 lbs.	\$ 127.99

MIXING PROCEDURES:

Use as is. Do not dilute. Smooth flush with rubber squeegee.

MATERIAL REQUIREMENTS (coverage):

Typically, one gallon will fill approximately 75-150 feet of cracks depending on depth and width of crack.



LANE ONE™

A 100% acrylic, trowel-grade patching material fortified with sand and rubber. Ideal for repairing running lanes and field event runways and pads. Also used for filling cracks up to 1" wide. Lane One is Black, but can be coated with TrackMaster Plus to match surface color of track area.

PRODUCT #	DESCRIPTION	WEIGHT	PRICE
C1750P	5 - Gallon Pail	51 lbs.	\$ 61.99
C1750K	30 - Gallon Keg	305 lbs.	\$ 379.99
C1750D	55 - Gallon Drum	545 lbs.	\$ 598.99

MIXING PROCEDURES:

Use as is. Do not dilute. Apply with soft rubber squeegee.

MATERIAL REQUIREMENTS (coverage):

Approximately 1 gallon per square yard at 1/8" depth. Ultimate coverage will be dependent upon depth of repair.

BLACK DISPERSION

For tinting running track latex and neutral coatings. Mix 1 gallon of Black Dispersion per 55 gallons of latex or neutral coatings.



PRODUCT #	DESCRIPTION	WEIGHT	PRICE
C1660G	1 - Gallon Pail	11 lbs.	\$ 20.99
C1660P	5 - Gallon Pail	53 lbs.	\$ 83.99
C1660D	55 - Gallon Drum	590 lbs.	\$ 870.99

NOTE: Colors will vary somewhat due to printing limitations. Ask your SealMaster Representative for a color chip card for more accurate representation.

*Solar Reflectance Index [SRI] is the percentage of solar energy that is reflected by a surface. These specific colors qualify for the LEED [Leadership in Energy and Environmental Design] program under Section 5S Credit 7.1: Heat Island Effect: Non-Roof. For more information visit www.usgbc.org or contact a LEED accredited professional.

DARK GREEN

BROWN
COLORPLUS FUSION

BRITE RED

BEIGE

RED
LEED CREDIT *SRI=36

BLACK



TENNIS NETS

TOURNAMENT TAPERED - 3mm braided body, double [2] layer vinyl headband, double top 6 mesh body, fiberglass dowels, 42' x 3 1/4' [42" high at posts - tapers to 36]

TOURNAMENT DH - DH-3mm braided body, 42' x 3 1/4', double [2] layer vinyl headband, coated cable, dowels: also available in 33' and 36' lengths for single courts.

PRODUCT #	DESCRIPTION	WEIGHT	PRICE
T5350	Tournament Tapered	24 lbs.	\$ 195.99
T5355	Tournament DH	19 lbs.	\$ 150.99



NET ACCESSORIES

PRODUCT #	DESCRIPTION	WEIGHT	PRICE
T5400	Deluxe Adjustable Center Strap - 2" Polyester White	1 lb.	\$ 13.99
T5410	Center Pipe Anchor - 1.9" O.D. Galvanized Steel	2 lbs.	\$ 14.99

POST SLEEVE T-PLUGS



PRODUCT #	DESCRIPTION	WEIGHT	PRICE
T5390	Steel T-Plugs - Round 3" O.D. [set of 2] - Black	6 lbs.	\$ 66.99/set
T5395	Steel T-Plugs - Square 3" [set of 2] - Black	6 lbs.	\$ 66.99/set
T5470	Steel T-Plugs - Round 2 7/8" [set of 2] - Black	6 lbs.	\$ 66.99/set



Premier Net Posts available in Round or Square design.



E-Z Tennis Post



Post Sleeves

NET POSTS AND SLEEVES

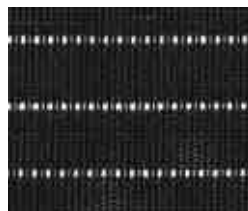
PRODUCT #	DESCRIPTION	WEIGHT	PRICE
Premier Net Posts - Round Round internal wind net posts - 3" O.D.			
T5360G	Net Posts - Green	46 lbs.	\$ 384.99
T5360B	Net Posts - Black	46 lbs.	\$ 384.99
T5365	Galvanized Round Net Post Sleeves	10 lbs.	\$ 60.99
Premier Net Posts - Square Square internal wind net posts - 3" sq.			
T5370G	Net Posts - Green	54 lbs.	\$ 405.99
T5370B	Net Posts - Black	54 lbs.	\$ 405.99
T5375	Galvanized Square Net Post Sleeves	35 lbs.	\$ 108.99
E-Z Tennis Posts - Round Round external wind net posts - 2 7/8" O.D.			
T5380G	Net Posts - Green	62 lbs.	\$ 299.99
T5380B	Net Posts - Black	62 lbs.	\$ 299.99
T5385	PVC Round Net Post Sleeves	5 lbs.	\$ 40.99



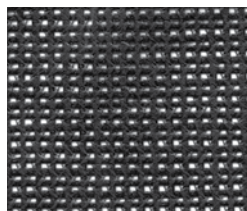
PICKLEBALL / KIDS TENNIS

PRODUCT #	DESCRIPTION	WEIGHT	PRICE
Premier Net Posts - Round [36" above ground] - 3" O.D.			
T5475	Premier 36" Green	42 lbs.	\$ 384.99
T5480	Premier 36" Black	42 lbs.	\$ 384.99
T5365	Galvanized Round Net Post Sleeves	10 lbs.	\$ 60.99
T5485	Pickleball / Kids Net	14 lbs.	\$ 142.99

ALL CATALOG PRICES ARE F.O.B. SANDUSKY, OHIO



POLY-PRO



VCP VINYL

Digital printing and logos
available at additional cost
[VCP only]



DOURASCREEN

WINDSCREENS

PRODUCT #	DESCRIPTION	WEIGHT	PRICE
Poly-Pro / Open Mesh Available in 6' and 9' heights [100% Polypropylene]			
T5435G	6' Dark Green	.06 lbs./sq. ft.	\$.93/sq. ft.
T5440G	9' Dark Green - Includes Center Tab*	.06 lbs./sq. ft.	\$.98/sq. ft.
T5435B	6' Black	.06 lbs./sq. ft.	\$.93/sq. ft.
T5440B	9' Black - Includes Center Tab*	.06 lbs./sq. ft.	\$.98/sq. ft.
VCP Vinyl / Open Mesh Available in 6' and 9' heights [50% Vinyl, 50% Polyester]			
T5425G	6' Dark Green	.06 lbs./sq. ft.	\$.88/sq. ft.
T5430G	9' Dark Green - Includes Center Tab*	.06 lbs./sq. ft.	\$.93/sq. ft.
T5425B	6' Black	.06 lbs./sq. ft.	\$.88/sq. ft.
T5430B	9' Black - Includes Center Tab*	.06 lbs./sq. ft.	\$.93/sq. ft.
Dourascreen / Open Mesh Available in 6' and 9' heights [22% high tenacity fiber, 78% foam PVC]			
T5415G	6' Dark Green	.08 lbs./sq. ft.	\$ 1.29/sq. ft.
T5420G	9' Dark Green - Includes Center Tab*	.08 lbs./sq. ft.	\$ 1.34/sq. ft.
T5415B	6' Black	.08 lbs./sq. ft.	\$ 1.29/sq. ft.
T5420B	9' Black - Includes Center Tab*	.08 lbs./sq. ft.	\$ 1.34/sq. ft.

* Includes center tab with grommets for attaching center to fence

All windscreens grommeted every 18" on top, bottom, and middle [horizontal connections]
and every 12" on the sides [vertical connections]

•• Custom labor charges may apply



WINDSCREEN ACCESSORIES

PRODUCT #	DESCRIPTION	PRICE
T5445	AVR Air Vent Reinforced	\$ 11.99 ea.
T5450	Die Cut Air Vent [VCP only]	\$ 5.99 ea.
T5455	C-Snaps 3" Plastic - Box of 100	\$ 42.99
T5460	Tie Wraps case of 100 - 7" 50 lbs. break-strength	\$ 11.99
T5462	Tie Wraps case of 100 - 8" 120 lbs. break-strength	\$ 20.99
T5465	Braided Lacing Cord Reel - 600 ft. black [fastens windscreens]	\$ 102.99



PORTABLE NET SYSTEMS

PRODUCT #	DESCRIPTION	WEIGHT	PRICE
T5490	Pickleball - 8 & Under Portable Net [22' L x 36" H]	95 lbs.	\$ 544.99
T5496	Pickleball Portable Net [22' L x 36" H]	24 lbs.	\$ 208.99



LINE TAPING MACHINE

A must for striping tennis courts, basketball courts, and other surfaces where precision markings are required. Lays tape for lines up to 4" wide. Comes with guides for 18mm, 24mm, and 48mm tape [metric equivalents for 3/4", 1" & 2"]. Imperial tape guides are also available.

PRODUCT #	DESCRIPTION	WEIGHT	PRICE
T7600	Line Taping Machine	16 lbs.	\$ 817.99
T7610	Pole Extension Kit [For 3-point lines and extra large circles]	13 lbs.	\$ 244.99



MASKING TAPE

PRODUCT #	DESCRIPTION	WEIGHT	PRICE
T1560	1-inch Green Single Roll	2 lbs.	\$ 11.99
T1570	1-inch Green Case of 36 Rolls	16 lbs.	\$ 394.99
T1580	2-inch Single Roll	1 lb.	\$ 5.99
T1590	2-inch Case of 24 Rolls	16 lbs.	\$ 108.99



MYSTICWASHER

IDEAL FOR FLAT SURFACE AND VERTICAL CLEANING!

MysticWasher Features:

- Available in 24" and 30" cleaning widths
- Housing is aircraft aluminum and powder-coated steel
- Pneumatic, adjustable front casters
- Siphon tube chemical injection system
- Professional spray wand with five quick-connect tips

PRODUCT #	DESCRIPTION	WEIGHT
T6011	MW24 24" Cleaning Path	200 lbs.
T6012	MW30 30" Cleaning Path	200 lbs.

* Call for pricing



PATCHING STRAIGHTEDGE

The smoothest patches ever in just one pass of the straightedge. Ideal for patching and filling low spots in tennis courts, parking lots, and driveways. Makes patching a one-man operation. Lightweight yet durable metal construction. Available in 4, 6, 8, and 10 ft. widths. Includes wood handle.

PRODUCT #	DESCRIPTION	WEIGHT	PRICE
T1500	4-foot with Handle	12 lbs.	\$ 132.99
T1510	6-foot with Handle	15 lbs.	\$ 135.99
T1520	8-foot with Handle	20 lbs.	\$ 143.99
T1530	10-foot with Handle	25 lbs.	\$ 148.99
T1490	Straightedge Handle	2 lbs.	\$ 14.99

* NOTE: The 10-foot straight edge must ship common carrier. Others can ship UPS.



LIGHTWEIGHT ALUMINUM SPORT SQUEEGEE

THE ULTIMATE SQUEEGEE

Ideal for Tennis Court Color Coatings as well as pavement sealers. Features soft, tapered rubber blade for superior results on both sport courts as well as asphalt pavement.

PRODUCT #	DESCRIPTION	WEIGHT	PRICE
T1277	24" Sport Squeegee Complete	4 lbs.	\$ 79.99
T1272	36" Sport Squeegee Complete	6 lbs.	\$ 91.99
T1292	48" Sport Squeegee Complete	8 lbs.	\$ 109.99
T1311	60" Lightweight Squeegee Complete	9 lbs.	\$ 104.99
A) RUBBER REFILLS:			
T1278	24" Sport Rubber Blade Refill	3 lbs.	\$ 22.99
T1326	36" Sport Rubber Blade Refill	3 lbs.	\$ 30.99
T1327	48" Sport Rubber Blade Refill	3 lbs.	\$ 40.99
T1324	60" Lightweight Squeegee Rubber Refill	4 lbs.	\$ 39.99
B) RUBBER REFILLS:			
T1281	36" Rubber Refill	3 lbs.	\$ 25.99
T1301	48" Rubber Refill	3 lbs.	\$ 32.99
T1321	60" Rubber Refill	4 lbs.	\$ 39.99



DRILL PADDLE MIXER

Designed for mixing 55 gallon drums.

PRODUCT #	DESCRIPTION	WEIGHT	PRICE
T9000	30" height with 8.5" x 5" paddle	3 lbs.	\$ 50.99
T9001	48" height with 8.5" x 5" paddle	4 lbs.	\$ 62.99



COURT DRY ROLLER

PRODUCT #	DESCRIPTION	WEIGHT	PRICE
T5505	36" Court Dry Roller	6 lbs.	\$ 69.99



BASKETBALL GOAL ADJUSTABLE SYSTEM

Features:

- J-Bolt Anchor System
- Pressure Flex™ Goal
- 6'-10' Adjustable Rim Height
- Backboard and Pole Padding



PRODUCT #	DESCRIPTION	WEIGHT	PRICE
Adjustable Basketball Systems - 6" sq. Pole (Glass backboards)			
T5301	Adjustable Basketball System - 4' Ext., 42" x 5' Backboard	650 lbs.	\$ 1,844.99
T5302	Adjustable Basketball System - 4' Ext., 42" x 6' Backboard	680 lbs.	\$ 1,925.99
T5303	Adjustable Basketball System - 5' Ext., 42" x 6' Backboard	690 lbs.	\$ 2,081.99



BASKETBALL GOAL GOOSENECK SYSTEM

Features:

- Zinc Plated Pole and Hardware
- Heavy-duty backboard support braces
- Standard in-ground installation (Direct Bury)

PRODUCT #	DESCRIPTION	WEIGHT	PRICE
Fan Shaped Steel Backboard - Designed for 10' rim height			
T5308	Gooseneck Basketball Goal - 3.5" O.D. Pole, 3' Ext.	278 lbs.	\$ 1,042.99
T5309	Gooseneck Basketball Goal - 4.5" O.D. Pole, 4' Ext.	315 lbs.	\$ 1,233.99

Trailer Mounted Tanks



Skid Mounted Tanks



COLOR COATING MIXING TANKS

ULTIMATE MACHINES FOR MIXING & PUMPING
TENNIS COURT SURFACING MATERIALS

AVAILABLE IN SKID OR TRAILER MOUNT

Color Coating Mixing Tank Features:

- Available in dual 200 or dual 300 gallon tank design
- Air-driven dual diaphragm 2-inch pump
- 200-feet of 1-inch hose and wand
- Full-sweep, super heavy duty agitation - hydraulically driven

Unique Dual
Tank Designs

PRODUCT #	DESCRIPTION	WEIGHT
E2100	Dual 200 Skid Unit	4,000 lbs.
E2120	Dual 300 Skid Unit	4,200 lbs.
E2140	Dual 200 Trailer Unit - Two (6,000 lb.) axles with electric brakes and lights	6,000 lbs.
E2160	Dual 300 Trailer Unit - Two (8,000 lbs.) axles with electric brakes and lights	5,840 lbs.

* Call for pricing